

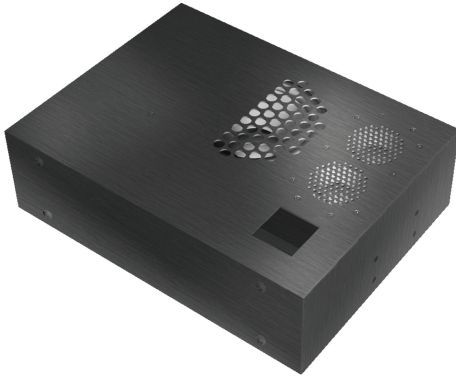
ALTO

AVIATION

Premium Cabin Audio/Entertainment Solutions
for all aircraft in Business Aviation™

ASF-614

Aircraft Cabin Full Range Loudspeaker



The ASF-614 is a lightweight, full-range premium loudspeaker enclosure for the aviation market. It is specifically designed for ceiling installations in VVIP aircraft which require excellent full-range audio in smaller spaces. This two-way, bass reflex loudspeaker module includes a subwoofer and dual extended range drivers that are precisely matched to the acoustically tuned enclosure resulting in high output. The orientation of the two drivers provides for a wide sound dispersion characteristic reducing localization and an improvement in the acoustic balance in the aircraft cabin.

FEATURES

- Weighs less than 4.2 lbs (1.9 kg)
- 3.4" deep
- Dual drivers for excellent output volume
- Full range audio designed for use in ceiling installations in VVIP aircraft.
- TSO-C139
- Integrated grills protect speakers during installation
- Bass reflex aluminum enclosure with welded seams
- Integral part of the ALTO Aviation EntertainmentSystem (AES)

SPECIFICATIONS

Product Code	ALTO P/N 106508-614-4AXXXX (4 Ohm) (Standard connector type A)
Drivers	5.25" subwoofer (1 per enclosure) 2" mid/high drivers (2 per enclosure)
Frequency Response	40Hz - 20KHz
Enclosure	Bass reflex matched precisely to the drivers Aluminum with welded seams Integral grill for driver protection during installation
Impedance	4 Ohm (nominal)
Continuous Power Rating	20 Watt RMS
Max. Power Rating	40 Watt RMS
Sensitivity	94dB SPL @ 1W/1m
DO-160F Env. Cat	[A2X]CAB[(SC)(HR)]XXXXXXBXXXXXX[XXXXX]XXXX
Dimensions	9.0"W X 12.0"H X 3.4"D 228.6mm W X 304.8mm H X 87.4mm D
Mating Connector	2 pin Amp Universal MATE-N-LOK(Connector type A)
Weight	<4.2 lbs (<1.9 kg)

ASF-614 Aircraft Cabin Full Range Loudspeaker

ALTO

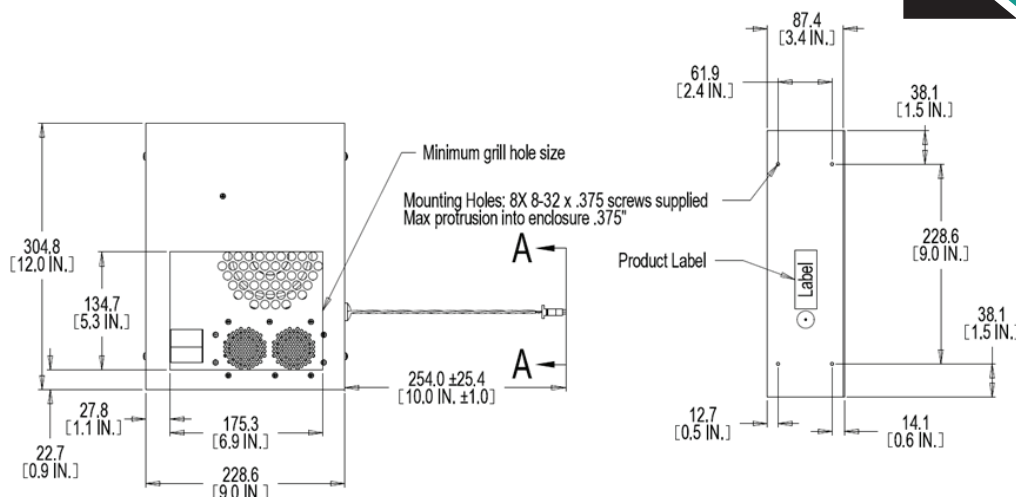
AVIATION

Premium Cabin Audio/Entertainment Solutions
for all aircraft in Business Aviation™

ASF-614

Aircraft Cabin Full
Range Loudspeaker

DIMENSIONS

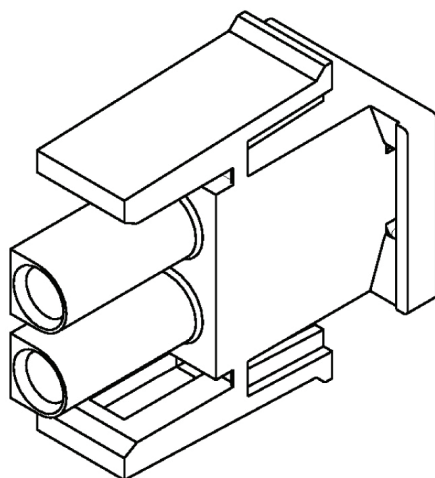


Note: Dimensions are for reference only. See DA (Delivered Assembly) drawing for exact dimensions. If the dimension, weight, and connector specifications of this product do not meet your requirements, ALTO can custom design a product for your application.

CONNECTOR PINOUTS

Connector for p/n's 106508-614-XAXXXX where "A" designates specific connector.
Please contact ALTO for additional connector options.

Pin 2 -
Pin 1 +



Mating Connector
Amp PN 350778-1

Mating Pin
Amp PN 350550-1