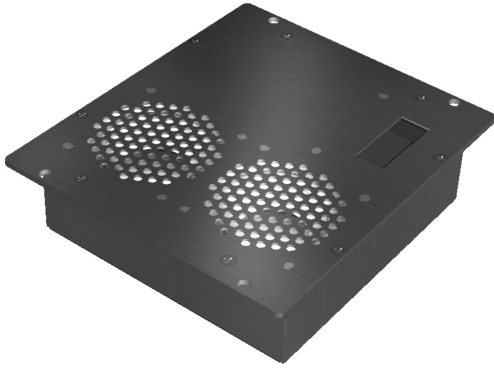


ALTO

AVIATION

Premium Cabin Audio/Entertainment Solutions
for all aircraft in Business Aviation™

ASP-512 Aircraft Cabin Loudspeaker



The ASP-512 is a bass reflex loudspeaker module with two high excursion drivers that are precisely matched to the acoustically tuned enclosure resulting in high output. It weighs less than 12 oz. The motor structure of the drivers is designed to have low magnetic leakage compared to conventional designs. The orientation of the two drivers provides for a wide sound dispersion characteristic reducing localization and an improvement in the acoustic balance in the aircraft cabin. The small dimensions of the unit simplify installation in the overhead panels, requiring less width and depth behind the panel, and a smaller grill opening into the cabin.

FEATURES

- Weighs less than 12 ounces
- 1.5" deep
- Small package allows for easy installation
- Wide dispersion pattern to reduce near-speaker localization while providing even sound throughout the cabin
- TSO-C139
- Integrated grills protect speakers during installation
- Aluminum enclosure with welded seams
- Integral part of the ALTO Aviation Entertainment System (AES)

SPECIFICATIONS

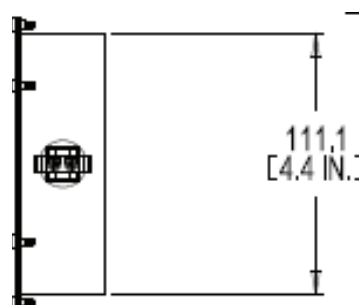
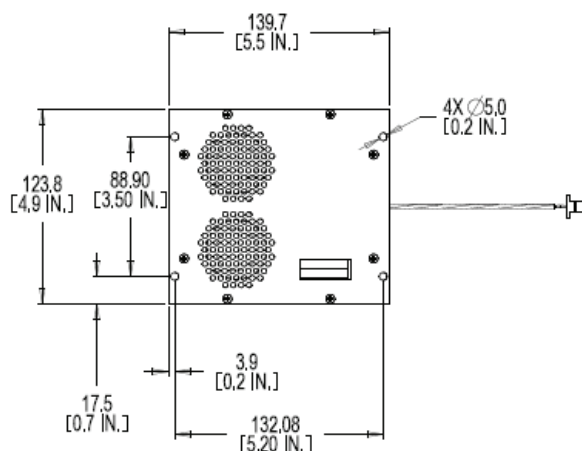
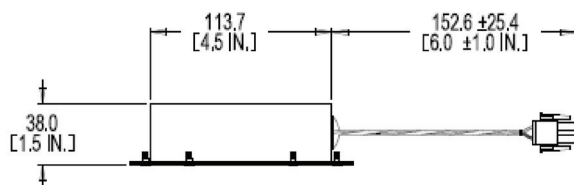
Product Code	106508-512-4AXXXX (4 Ohm) (Standard connector type A) 106508-512-8AXXXX (8 Ohm) (Standard connector type A) 106508-512-4A0001 is a direct replacement for 105475-0001 106508-512-8A0001 is a direct replacement for 105475-0008
Frequency Response	150Hz - 20KHz
Impedance	4 or 8 Ohm nominal, depending on application
Drivers	2" high excursion, low magnetic leakage 2 per enclosure
Enclosure	Bass reflex matched precisely to the drivers, Aluminum with welded seams, Integral grill for driver protection during installation
Continuous Power Rating	20 Watt RMS
Max. Power Rating	40 Watt RMS
Sensitivity	90 dB SPL @ 1W/1m @ 1kHz
DO-160F Env. Cat	[A2X]CAB[(SC)(HR)]XXXXXXBXXXXXX[XXXXX]XXXX
Mating Connector	2 pin Amp Universal MATE-N-LOK (Connector type A)
Weight	<12 oz (341 g)
Dimensions	5.5"W X 4.9"H X 1.5"D 139.7mm W X 123.8mm H X 38mm D

ALTO

AVIATION

Premium Cabin Audio/Entertainment Solutions
for all aircraft in Business Aviation™

ASP-512 Aircraft Cabin Loudspeaker

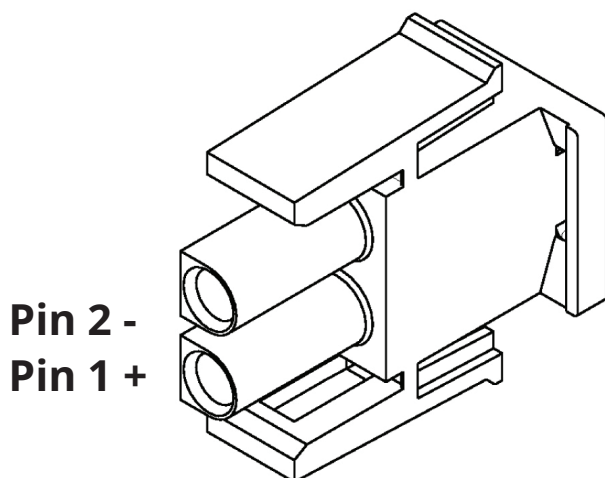


DIMENSIONS

Note: Dimensions are for reference only. See DA (Delivered Assembly) drawing for exact dimensions. If the dimension, weight, and connector specifications of this product do not meet your requirements, ALTO can custom design a product for your application.

CONNECTOR PINOUTS

Connector for p/n's 106508-512-XAXXXX, where "A" designates specific connector.
Please contact ALTO for additional connector options.



Mating Connector
Amp PN 350778-1

Mating Pin
Amp PN 350550-1