

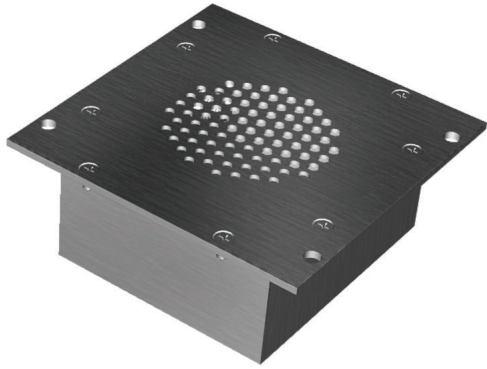
ALTO

AVIATION

Premium Cabin Audio/Entertainment Solutions
for all aircraft in Business Aviation™

ASP-375

Aircraft Cabin Surround Speaker



The ASP-375 is a surround speaker enclosure that weighs less than 6.5oz. This speaker provides superior surround sound with little impact to the weight of the aircraft. The motor structure of the driver is designed to have low magnetic leakage compared to conventional designs. The small dimensions of the unit simplify installation in the overhead panels, requiring less width and depth behind the panel, and a smaller grill opening into the cabin.

FEATURES

- Weighs less than 6.5 ounces
- 1.5" deep
- Small package allows for easy installation
- Wide dispersion pattern to reduce near-speaker localization while providing even sound throughout the cabin
- TSO-C139
- Integrated grills protect speakers during installation
- Aluminum enclosure with welded seams
- Integral part of the ALTO Aviation Entertainment System (AES)

SPECIFICATIONS

Product Code	106508-375-4AXXXX (4 Ohm) (Standard connector type A) 106508-375-8AXXXX (8 Ohm) (Standard connector type A) 106508-375-8A0001 is a direct replacement for 106120-0001
Frequency Response	300Hz - 20KHz
Impedance	4 or 8 Ohm nominal, depending on application
Drivers	2" high excursion, low magnetic leakage 1 per enclosure
Enclosure	Aluminum with welded seams, Integral grill for driver protection during installation
Continuous Power Rating	10 Watt RMS
Max. Power Rating	20 Watt RMS
Sensitivity	89 dB SPL @ 1W/1m @ 1kHz
DO-160F Env. Cat	[A2X]CAB[(SC)(HR)]XXXXXXXXBXXXXXX[XXXXX]XXXX
Mating Connector	2 pin Amp Universal MATE-N-LOK (Connector type A)
Weight	<6.5 oz (<185 g)
Dimensions	3.7"W X 3.7"H X 1.5"D 95.2mm W X 95.2mm H X 38.8mm D

ALTO

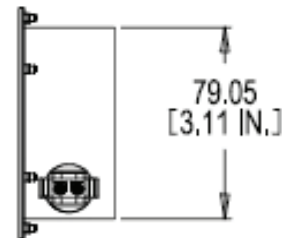
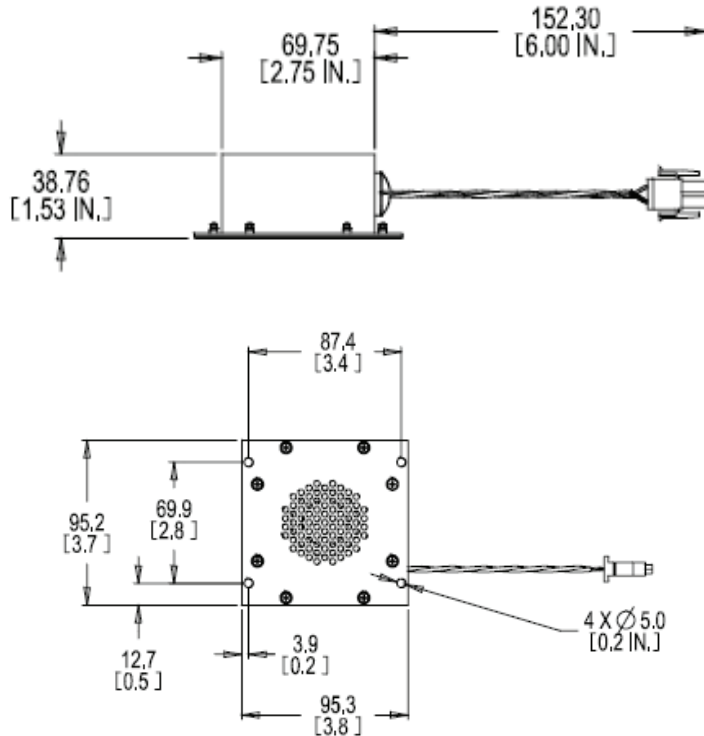
A V I A T I O N

Premium Cabin Audio/Entertainment Solutions
for all aircraft in Business Aviation™

ASP-375

Aircraft Cabin
Surround Speaker

DIMENSIONS

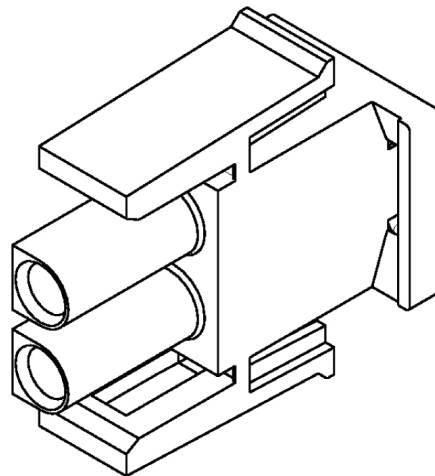


Note: Dimensions are for reference only. See DA (Delivered Assembly) drawing for exact dimensions. If the dimension, weight, and connector specifications of this product do not meet your requirements, ALTO can custom design a product for your application.

CONNECTOR PINOUTS

Connector for p/n's 106508-375-XAXXXX, where "A" designates specific connector.
Please contact ALTO for additional connector options.

Pin 2 -
Pin 1 +



Mating Connector
Amp PN 350778-1

Mating Pin
Amp PN 350550-1