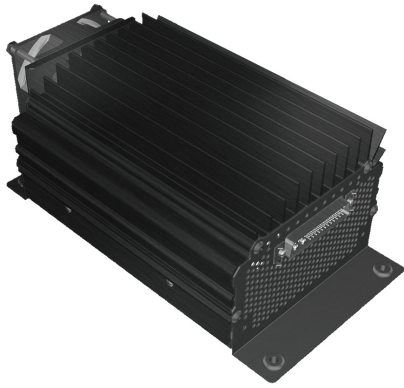


# ALTO

## AVIATION

Premium Cabin Audio/Entertainment Solutions  
for all aircraft in Business Aviation™



### AA-626DC

Aircraft Cabin Audio Amplifier  
w/Custom EQ

The AA-626DC is a TSO-C139 certified 6 channel, 240 Watt RMS audio amplifier with integrated custom EQ for specific aircraft types. Utilizing proprietary acoustic measurement and design software, the aircraft interior is acoustically mapped and circuits are designed so that the effects of the interior are neutralized allowing the music to be heard as the artist intended. Designed to be used in conjunction with ALTO speakers and subwoofers, the amplifier will deliver 40 Watts per channel. Each channel contains a distortion limiter circuit which allows for full power operation without harsh distortion. The low weight (3 lbs) and small size (5.4"W x 3.4"H x 10.1"D) allow for convenient mounting and flexible system configuration. Powered from Aircraft 28 VDC supply.

## FEATURES

- Unit certified to TSO-C139
- Weighs only 3 lbs
- Small package 5.4"W x 3.4"H x 10.1"D
- Integral EQ customized for each aircraft type
- Proprietary SineWatch™ circuitry prevents audible distortion at full power without affecting audio signal integrity and helps overcome aircraft noise.
- 6 channels, 40 Watts RMS per channel
- Operates on +28VDC power supply
- Gain adjustable in channel pairs to balance bass and mid/high frequency speakers
- Aluminum case w/ forced air cooling from end mounted fan
- Integral part of the ALTO Aviation Entertainment System (AES)

## SPECIFICATIONS

Product Code	105450-XXXX	-XXXX describes the EQ version/aircraft type
Frequency Response	20Hz - 20KHz	
Power Supply	+28 VDC	
Operating Current	3 A nominal (varies with volume setting and music content) 16 A maximum (20 A breaker recommended)	
Idle Current (no signal)	800 mA	
Input	Differential, 10K ohm input impedance	
Input Level	600 mV RMS to 6 V RMS, Nominal 2V RMS	
Output Power	40 Watts RMS/channel (240W) total	
Output Load	4 - 8 Ohm recommended, 3 ohm minimum, Average impedance of all 6 channels must be >3.5 ohms	
Distortion	<0.1% THD @ 50% rated power, maximum 3% (distortion limiter active)	
Output Noise (no signal)	< 200 uV A-Wgt	
Gain	Adjustable in channel pairs, 0 to +18 dB in 2dB steps	
Equalizers	Custom designed EQ/crossovers matched to aircraft type utilizing speakers from the ALTO Aviation Entertainment System (AES)	
Connector	43W2 Combo D Male	
Dimensions	5.4" W (138mm) X 3.4" H (87mm) X 10.1"D (257mm)	
Weight	3 lbs (1.4 kg)	

# ALTO

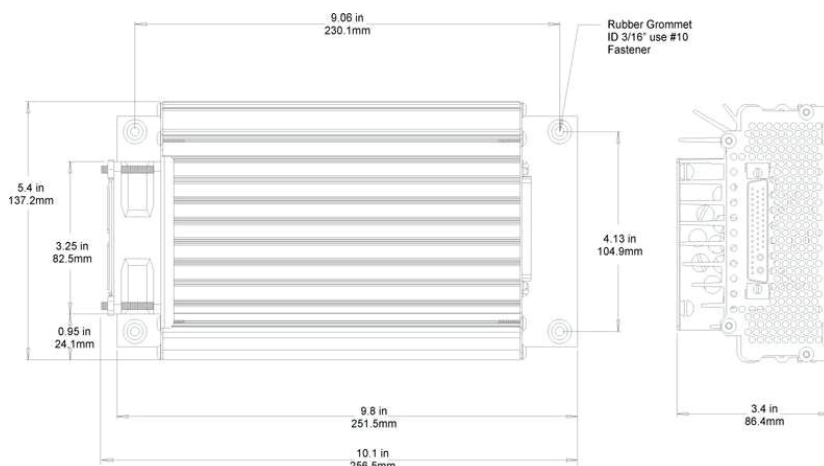
## AVIATION

Premium Cabin Audio/Entertainment Solutions  
for all aircraft in Business Aviation™

### AA-626DC

Aircraft Cabin Audio Amplifier  
w/Custom EQ

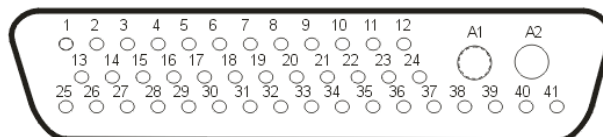
### DIMENSIONS



If the dimension, weight, and connector specifications of this product do not meet your requirements, ALTO can custom design a product for your application.

### CONNECTOR PINOUTS

43 Pin Combo-D D-sub Male connector  
(Positronic # CBD43W2M55B1000X)



PIN#	FUNCTION	PIN#	FUNCTION
1	Zone 1 Left Mid/High Speaker Out+	23	N/C
2	Zone 1 Left Mid/High Speaker Out-	24	N/C
3	Zone 1 Right Mid/High Speaker Out+	25	N/C
4	Zone 1 Right Mid/High Speaker Out-	26	N/C
5	Zone 2 Left Mid/High Speaker Out+	27	N/C
6	Zone 2 Left Mid/High Speaker Out-	28	N/C
7	Zone 2 Right Mid/High Speaker Out+	29	N/C
8	Zone 2 Right Mid/High Speaker Out-	30	N/C
9	Zone 1 Subwoofer Output+	31	N/C
10	Zone 1 Subwoofer Output-	32	N/C
11	Zone 2 Subwoofer Output+	33	N/C
12	Zone 2 Subwoofer Output-	34	N/C
13	Zone 1 Left Input+	35	N/C
14	Zone 1 Left Input-	36	DC Chassis Ground
15	Zone 1 Right Input+	37	N/C
16	Zone 1 Right Input-	38	N/C
17	Zone 2 Left Input+	39	N/C
18	Zone 2 Left Input-	40	N/C
19	Zone 2 Right Input+	41	N/C
20	Zone 2 Right Input-	A1	+ 28 VDC
21	N/C	A2	Ground
22	N/C		

AA-626DC Aircraft Cabin Audio Amplifier w/Custom EQ