

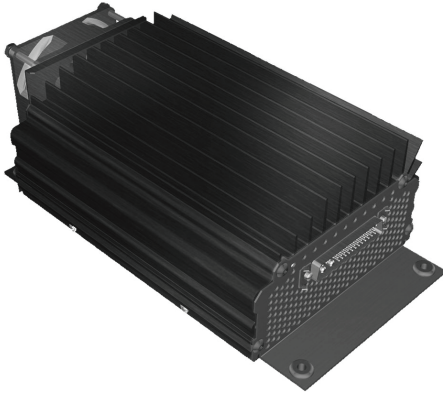
ALTO

AVIATION

Premium Cabin Audio/Entertainment Solutions
for all aircraft in Business Aviation™

AA-506AC

Aircraft Cabin Audio Amplifier



The AA-506AC is a 6 channel, 240 Watt RMS audio amplifier. Designed to be used in conjunction with standard PSU and woofer loudspeakers, the amplifier will deliver 40 Watts per channel. Each channel contains a distortion limiter circuit which allows for full power operation without harsh distortion. Each channel has its own gain control as well as a configurable crossover. The low weight (4.2 lbs) and small size (5.4"W x 3.4"H x 10.1"D) allow for convenient mounting and flexible system configuration. Powered from Aircraft 115V AC 400Hz supply.

FEATURES

- Small, lightweight package 4.2 lbs (1.9 kg)
- 6 channels, 40W RMS per channel, 110VAC 400Hz power
- Each channel has adjustable frequency crossover
- Configurable as low-pass, high-pass, or full bandwidth
- Gain adjustable in channel pairs
- Proprietary distortion limiter circuitry allows full power operation without harsh distortion
- Aluminum case w/ forced air cooling from end mounted fan

SPECIFICATIONS

Product Code	105210-0001 Standard Configuration
Frequency Response	20Hz - 20KHz
Power Supply	AC 115V, 400Hz
Operating Current	(Max) 5A 7.5 Amp Breaker recommended
Idle Current (no signal)	200 mA
Input	6 channel differential, 10K ohm input impedance
Input Level	600 mV RMS to 6 V RMS, Nominal 2V RMS
Output Power	40 Watts RMS/channel (240W) total
Output Load	4 - 8 Ohm recommended, 3 ohm minimum, Average impedance of all 6 channels must be >3.5 ohms
Distortion	<0.5% @ rated power, maximum 3% (distortion limiter active)
Output Noise (no signal)	< 200 uV A-Wgt
Gain	Adjustable in channel pairs, 0 to +18 dB in 2dB steps
Crossover	Individually Adjustable, 60 - 200Hz, 12 dB/Oct. High-pass, Low-pass, or full bandwidth
Dimensions	5.4"W X 3.4"H X 10.1"D (138mmW x 87mmH x 259mmD)
Connector	43W2 Combo D Male
Weight	4.2 lbs (1.9kg)
Cooling	Forced air, external heat sink. Requires min. 1" air space above fins and 2" at each end for ventilation.

ALTO

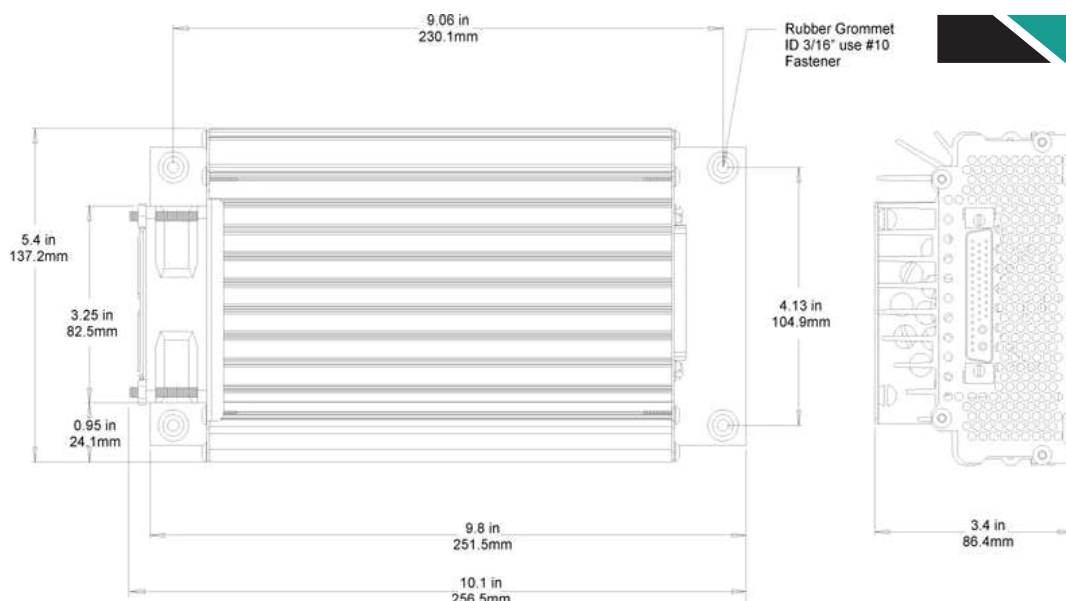
AVIATION

Premium Cabin Audio/Entertainment Solutions
for all aircraft in Business Aviation™

AA-506AC

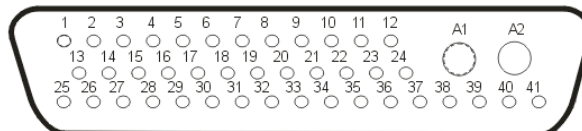
Aircraft Cabin Audio Amplifier

DIMENSIONS



CONNECTOR PINOUTS

43 Pin Combo-D D-sub Male connector
(Positronic # CBD43W2M55B1000X)



PIN#	FUNCTION	PIN#	FUNCTION
1	Speaker Output 1+	23	Channel Input 6+
2	Speaker Output 1-	24	Channel Input 6-
3	Speaker Output 2+	25	N/C
4	Speaker Output 2-	26	N/C
5	Speaker Output 3+	27	N/C
6	Speaker Output 3-	28	N/C
7	Speaker Output 4+	29	N/C
8	Speaker Output 4-	30	N/C
9	Speaker Output 5+	31	N/C
10	Speaker Output 5-	32	N/C
11	Speaker Output 6+	33	N/C
12	Speaker Output 6-	34	N/C
13	Channel Input 1+	35	N/C
14	Channel Input 1-	36	DC Chassis Ground
15	Channel Input 2+	37	AC EMI Ground
16	Channel Input 2-	38	N/C
17	Channel Input 3+	39	N/C
18	Channel Input 3-	40	N/C
19	Channel Input 4+	41	N/C
20	Channel Input 4-	A1	AC Power L2/N
21	Channel Input 5+	A2	AC Power L1
22	Channel Input 5-		

AA-506AC Aircraft Cabin Audio Amplifier