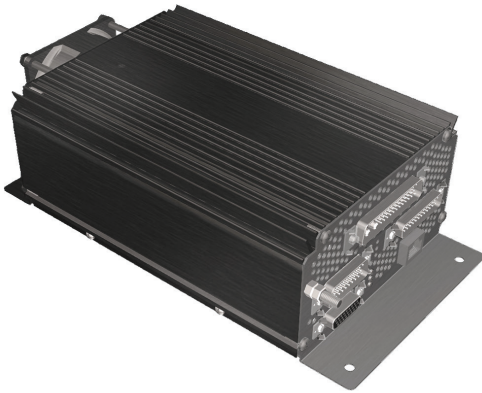


### DA-250DC

**Aircraft Cabin Digital Audio  
DC Amplifier with High-Level  
Input Universal Interface**



The ALTO DA-250DC is a TSO-C139 certified 8 X 40W / channel, Class D audio amplifier with integrated Digital Signal Processing (DSP) and High-Level Input Interface board with PA bypass and Aux input. The core design includes an 8 channel, 320 Watt RMS audio amplifier with an advanced audio processor. An isolated Interface card integrated into the unit allows the unit to be powered by Cabin Management System power amplifier outputs. The interface card will accept full range or split midrange/subwoofer audio outputs. The DA-250DC interfaces with typical cockpit audio systems as an Entertainment Amplifier. A selectable auxiliary input may be used to interface with volume controlled, personal media devices independent of the existing IFE system.

### FEATURES

- Unit certified to TSO-C139
- 8 channels, 40 Watts RMS per channel Class D for very high efficiency with low heat output
- Integral EQ customized for each aircraft interior
- Advanced DSP including dynamic bass management, signal compression, spatial enhancement, Sinewatch™ distortion elimination
- Allows PA over entertainment speakers via direct pass through, power loss or manual trigger.
- Integrated universal interface card that accepts directly coupled speaker level audio from full range or midrange/subwoofer outputs
- Volume controlled auxiliary input independent of legacy IFE system via ground logic select
- Preserves existing IFE configuration for ease of integration
- One unit supports one audio zone
- Operates on 28 VDC power supply
- Weight under 4 Lbs.
- Small enclosure with forced air cooling for flexible mounting

### SPECIFICATIONS

<b>Product Code</b>	106500-0250
<b>Frequency Response</b>	20Hz - 20KHz custom contoured to specific aircraft cabin
<b>Power Supply</b>	28VDC
<b>Operating Current</b>	3 A nominal 15 A maximum
<b>Idle Current (no signal)</b>	800 mA
<b>Audio Input</b>	2 Channel Speaker Level with separate hi-pass and low-pass inputs Line level stereo input for personal audio device (no pre-amp required)
<b>Output Power</b>	40 Watts RMS/channel (320W) total
<b>Output Load</b>	4 - 8 Ohm recommended, 3 ohm minimum Average impedance of all 8 channels must be >3.5 ohms
<b>Distortion</b>	<0.1% THD @ 50% rated power, maximum 3% (distortion limiter active)
<b>Equalizers</b>	Custom designed EQ/crossovers matched to aircraft cabin utilizing loudspeakers from the Alto Aviation Entertainment System (AES) catalog
<b>Dimensions</b>	5.4"W x 3.7"H x 10.1"D (138mmW x 94mmH x 257mmD)
<b>Weight</b>	<3.8 lbs / 1.72 kg
<b>DO-160F Env. Cat.</b>	[A2X]CAB[(SC)(HR)]EXXXFXZA(CF)[XXXI]AR(CF)ACTTM[XXE3X][XXXX]XAX

# ALTO

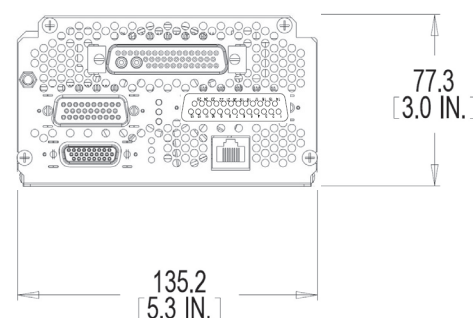
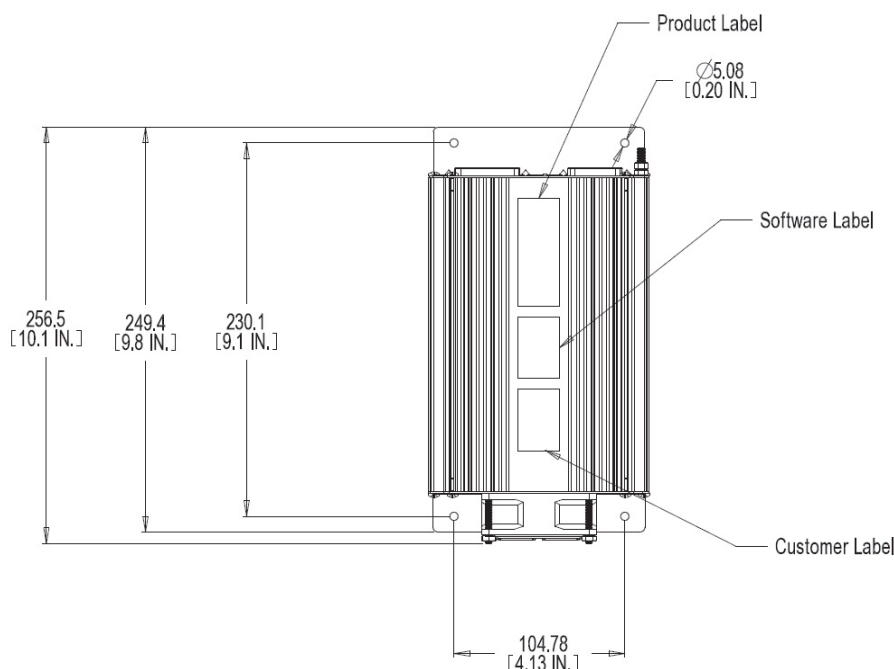
## AVIATION

Premium Cabin Audio/Entertainment Solutions  
for all aircraft in Business Aviation™

### DA-250DC

Aircraft Cabin Digital Audio  
DC Amplifier with High-Level  
Input Universal Interface

### DIMENSIONS



### CONNECTOR PINOUTS

#### J1 MAIN Connector

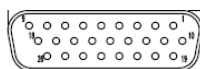
43W2 Combo D Male  
Mating connector



Positronic # CBD43W2M55B100V5X  
Positronic # CBC43W2S110ANVL0/AA

#### J2 AUX Connector

26 pin D-sub Female  
Mating connector



Positronic # ODD26F4B100V5X  
Positronic # DD26M10ANVL0/AA

#### Interface Connector J4

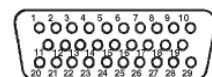
25 pin Male Hi-Density  
Mating connector



D-Sub Positronic # MD25M5B10T2X  
Positronic # RD25S10JVLX

#### Interface Connector J5

29 pin Male Std-Density  
Mating connector



D-Sub Positronic # MD29M5B100V5X  
Positronic # RD29S10ANVL0/AA-1738.0

DA-250DC Digital Amplifier