

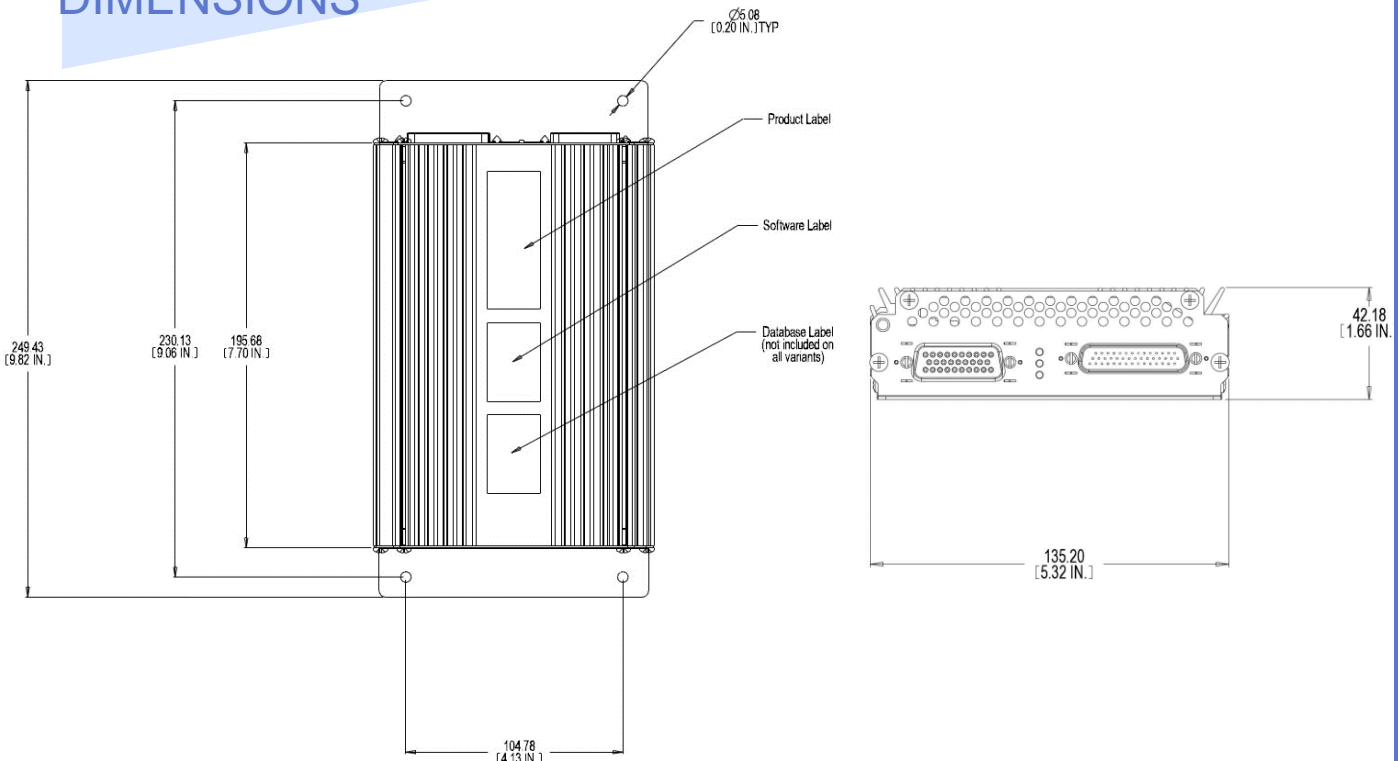


The Alto PA-100 series is a Cabin Audio Page/Chime Public Address amplifier. It incorporates Class D audio amplifier technology for high efficiency and very low thermal output. An integrated Digital Signal Processing (DSP) insures high reliability and very flexible configuration options. The unit is certified under TSO-C139 authorization and is available packaged together with the Alto Forte Series cabin entertainment amplifier for a more integrated and optimized system.

FEATURES

- 3 microphone inputs with Sidetone outputs
- 2 stereo briefer inputs
- 6 ordinance trigger inputs
- Can operate as master or slave for system expansion for larger aircraft
- 4 independent output channels @ 30W RMS / channel, supports up to 8 loudspeakers
- Operates on +28VDC Essential Power Bus
- Maximum current during normal operation 4A
- DSP Signal processing for optimal intelligibility
- Weight less than 2.3 lbs.
- Unit certified to TSO-C139

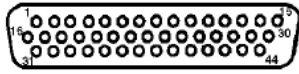
DIMENSIONS



Alto Aviation 86 Leominster Rd PO Box 399 Sterling, MA 01564
Phone: 978-466-5992 Toll Free 800-814-0123 Fax 978-466-5996

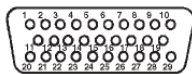
www.altoaviation.com

PA-100 Series CONNECTOR PINOUTS



PA system connector J4
44 pin Male Hi-Density D-Sub Positronic ODD44M5B100V5X
Mate= ODD44F10JVLX

30	Mic1 input +	6	Aux2 LEFT/MONO input +
15	Mic1 input -	7	Aux2 LEFT/MONO input -
16	Mic1 Key-Line input +	5	Aux2 RIGHT input +
17	Mic1 Key-Line input -	4	Aux2 RIGHT input -
3	Mic1 Sidetone Output	24	Aux2 Key-Line input +
28	Mic2 input +	25	Aux2 Key-Line input -
29	Mic2 input -	43	Ordinance Input 1+
18	Mic2 Key-Line input +	44	Ordinance Input 1-
19	Mic2 Key-Line input -	31	Ordinance Input 2+
2	Mic2 Sidetone Output	32	Ordinance Input 2-
26	Mic3 input +	33	Ordinance Input 3+
27	Mic3 input -	34	Ordinance Input 3-
20	Mic3 Key-Line input +	35	Ordinance Input 4+
21	Mic3 Key-Line input -	36	Ordinance Input 4-
1	Mic3 Sidetone Output	37	Ordinance Input 5+
10	Aux1 LEFT/MONO/ Slave input +	38	Ordinance Input 5-
11	Aux1 LEFT/MONO/ Slave input -	39	Ordinance Input 6+
9	Aux1 RIGHT/ Slave input +	40	Ordinance Input 6-
8	Aux1 RIGHT/ Slave input -	41	Weight-On-Wheels
22	Aux1 Key-Line input +	12	Audio GND for Chime & Sidetone Out
23	Aux1 Key-Line input -	13	Cockpit Chime Audio Out1
42	+28V Bias for opto-logic inputs	14	Cockpit Chime Audio Out2



PA system connector J5
29 pin Male Std-Density D-Sub Positronic MD29M5B100V5X
Mate= RD29F10JVLX

1	Speaker 1 Ent/PA Out +	16	N/C
2	Speaker 1 Ent/PA Out -	17	N/C
3	Speaker 2 Ent/PA Out +	18	N/C
4	Speaker 2 Ent/PA Out -	19	Ground bias for opto-logic inputs
5	Speaker 3 Ent/PA Out +	20	+28V Emergency Power Bus
6	Speaker 3 Ent/PA Out -	21	+28V Emergency Power Bus
7	Speaker 4 Ent/PA Out +	22	PA Active\ logic output
8	Speaker 4 Ent/PA Out -	23	N/C
9	Speaker Aux1 PA Out +	24	RS-422 RX-
10	Speaker Aux1 PA Out -	25	RS-422 RX+
11	Speaker Aux2 PA Out +	26	RS-422 TX-
12	Speaker Aux2 PA Out -	27	RS-422 TX+
13	PA Master LEFT Line Out +	28	GND
14	PA Master RIGHT Line Out +	29	GND
15	Line Out Ground		